

- | | | | |
|--|----------------------------------|--|----------------------------|
| | Proposed Selections | | U.S. Forest Service |
| | U.S. Forest Service | | |
| | Native Corporation | | |
| | State of Alaska | | |
| | Other | | |
| | Tongass N.F. Proclaimed Boundary | | |
| | Ranger District Boundary | | |
| | Designated Wilderness | | |
| | City & Borough Boundary | | |
| | MAF Marine Access Facility | | |
| | Highway | | |
| | Other Road | | |

Unrecognized Southeast Alaska Native Communities Recognition and Compensation Act

Urban Corporation for Wrangell, Wrangell Selections Map 1 of 5 Legislative Map, Version 1.0, November 2020

Proposed Selection	Acres	Public Land Survey System
Chichagof_Peak	3,168	Copper River Meridian
Inner_Wrangell_Is.	3,275	
South_Narrows	1,457	
Garnet_Ledge	2,146	
Total Acres	10,046	

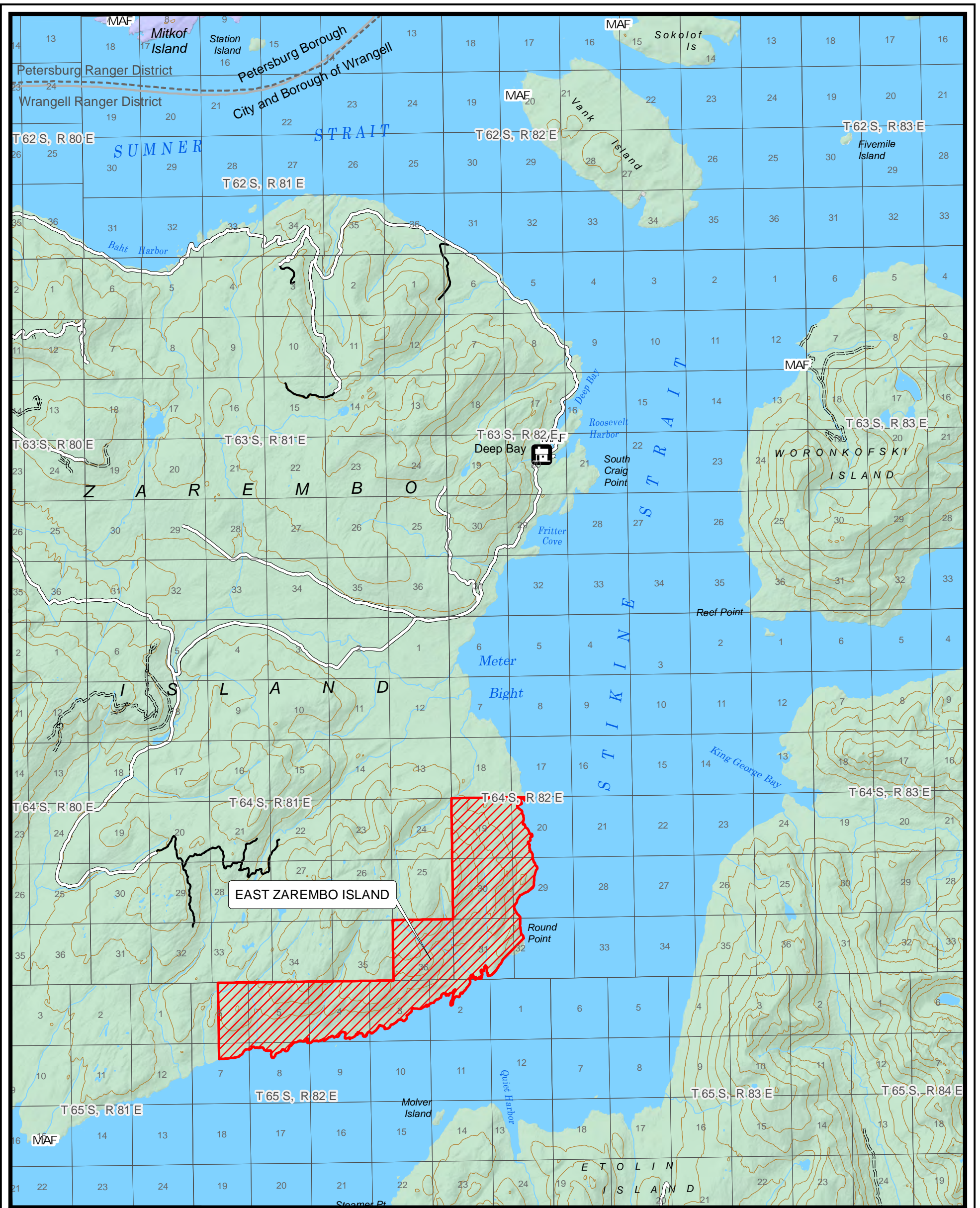
0 1 2 3 Miles

U.S. Forest Service - Alaska Region
Tongass National Forest
Alaska At-Large, U.S. Congressional District

Map prepared at the request of Senator Lisa Murkowski

Disclaimer

The USDA Forest Service makes no warranty, expressed or implied regarding the data displayed on this map, and reserves the right to correct, update, modify, or replace information.



- Proposed Selections
- U.S. Forest Service
- Native Corporation
- State of Alaska
- Other
- Tongass N.F. Proclaimed Boundary
- Ranger District Boundary
- Designated Wilderness
- City & Borough Boundary
- Marine Access Facility
- Highway
- Other Road

- U.S. Forest Service**
- Camping Area/Site
 - Campground
 - Picnic Site
 - Interpretive Site
 - Rental Cabin
 - Shelter
 - Wildlife Viewing Site
 - Open Roads
 - OHV Trail
 - Hiking Trail

Unrecognized Southeast Alaska Native Communities Recognition and Compensation Act

Urban Corporation for Wrangell, Wrangell Selections Map 2 of 5 Legislative Map, Version 1.0, November 2020

Proposed Selection	Acres	Public Land Survey System
East_Zarembo_Island	4,991	Copper River Meridian

Total Acres 4,991

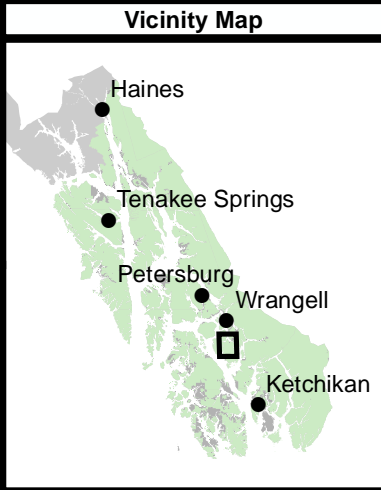
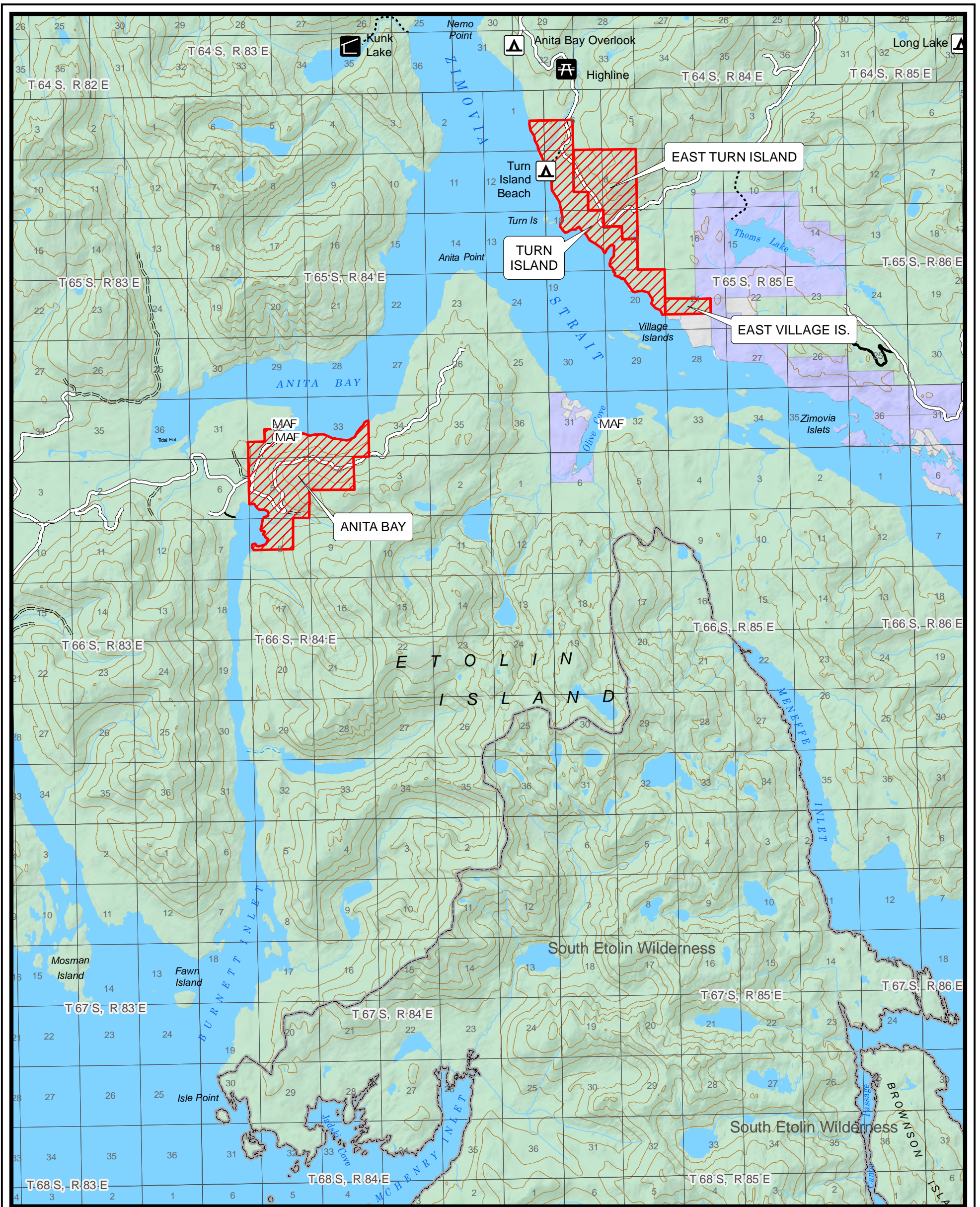


U.S. Forest Service - Alaska Region
Tongass National Forest
Alaska At-Large, U.S. Congressional District

Map prepared at the request of Senator Lisa Murkowski

Disclaimer

The USDA Forest Service makes no warranty, expressed or implied regarding the data displayed on this map, and reserves the right to correct, update, modify, or replace information.



	Proposed Selections		U.S. Forest Service
	Native Corporation		
	State of Alaska		
	Other		
	Tongass N.F. Proclaimed Boundary		
	Ranger District Boundary		
	Designated Wilderness		
	City & Borough Boundary		
	Marine Access Facility		
	Highway		
	Other Road		

Unrecognized Southeast Alaska Native Communities Recognition and Compensation Act

Urban Corporation for Wrangell,
Wrangell Selections Map 3 of 5
Legislative Map, Version 1.0, November 2020

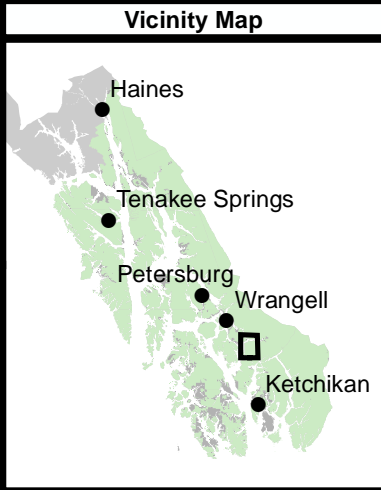
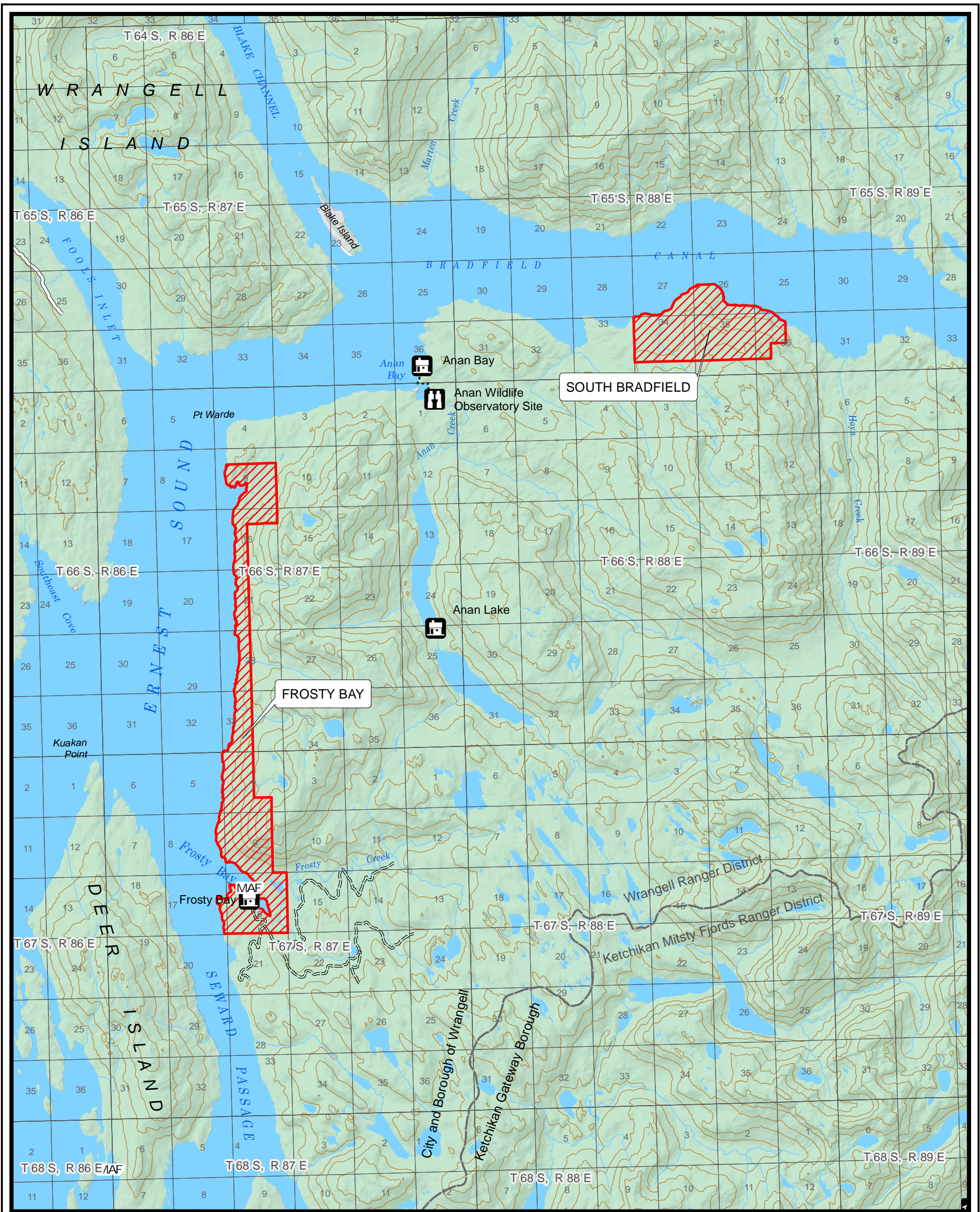
Proposed Selection	Acres	Public Land Survey System
East_Turn_Island	752	Copper River Meridian
Turn_Island	1,080	
East_Village_Is.	123	
Anita_Bay	1,495	
Total Acres	3,450	

0 1 2 3 Miles

U.S. Forest Service - Alaska Region
Tongass National Forest
Alaska At-Large, U.S. Congressional District

Map prepared at the request of Senator Lisa Murkowski

Disclaimer
The USDA Forest Service makes no warranty, expressed or implied regarding the data displayed on this map, and reserves the right to correct, update, modify, or replace information.



- Proposed Selections**
- U.S. Forest Service
- Native Corporation
- State of Alaska
- Other
- Tongass N.F. Proclaimed Boundary
- Ranger District Boundary
- Designated Wilderness
- City & Borough Boundary
- Marine Access Facility
- Highway
- Other Road

- U.S. Forest Service**
- Camping Area/Site
 - Campground
 - Picnic Site
 - Interpretive Site
 - Rental Cabin
 - Shelter
 - Wildlife Viewing Site
 - Open Roads
 - OHV Trail
 - Hiking Trail

Unrecognized Southeast Alaska Native Communities Recognition and Compensation Act

Urban Corporation for Wrangell, Wrangell Selections Map 4 of 5
Legislative Map, Version 1.0, November 2020

Proposed Selection	Acres	Public Land Survey System
Frosty_Bay	2,474	Copper River Meridian
South_Bradfield	1,452	

Total Acres: 3,926

0 1 2 3 Miles

U.S. Forest Service - Alaska Region
Tongass National Forest
Alaska At-Large, U.S. Congressional District

Map prepared at the request of Senator Lisa Murkowski

Disclaimer

The USDA Forest Service makes no warranty, expressed or implied regarding the data displayed on this map, and reserves the right to correct, update, modify, or replace information.

